

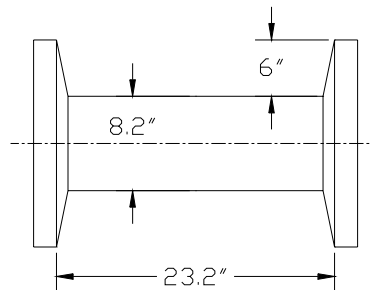
LH159-4 SAG WINCH & CARRIER

Line stringing utility machine mounted on high speed crawler. Due to it's 15 mph speed it can move from one location to the other quickly.

- 60,000 lb line pull on each winch
- Pneumatic controls standard
- Diesel powered standard



CABLE DIA.	DRUM CAPACITY
1/2"	1,830'
9/16"	1,465'
5/8"	1,200'
3/4"	845'
7/8"	610'
1"	472'



MORPAC INDUSTRIES, INC.

117 Frontage Road North, Suite A
Pacific, WA 98047-1052

Website: <http://www.morpac.com/>
Email: actuators@morpac.com

Phone: (253) 735-8922
Fax: (253) 735-8933