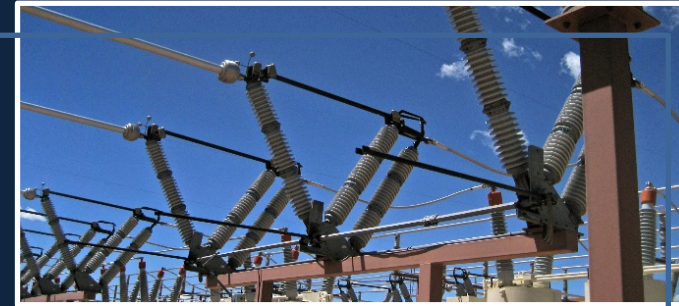
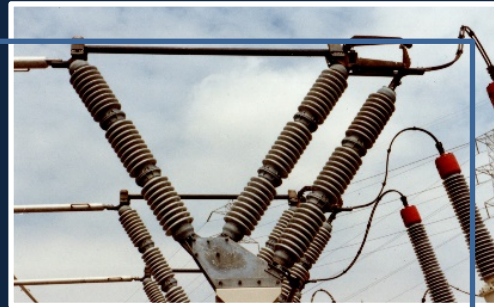


VERTICAL BREAK SWITCHES VBV

Morpac is the only manufacturer to offer a true vertical break V switch. With a center of gravity within less than 5% of its geometric center, the VBV can be mounted on a single beam in the same manner as center break V switches, which in addition to simplifying structures, allows the VBV to be installed in locations where space is limited.



| | VBV |
|---------------------|--------------|
| Primary Material | Copper |
| Current Range | 600A – 2000A |
| Voltage Range (nom) | 7.5kV– 230kV |

See Table of Ratings for Complete Details

The switch is easily mounted on a single cross arm pole structure, and is particularly suited to tower and substation installations where space is at a premium. The massive structure associated with parallel post switches is not required due to the compact base design. Therefore, a less expensive, aesthetically superior installation is achieved.