

**MORPAC**  
INDUSTRIES, INC.

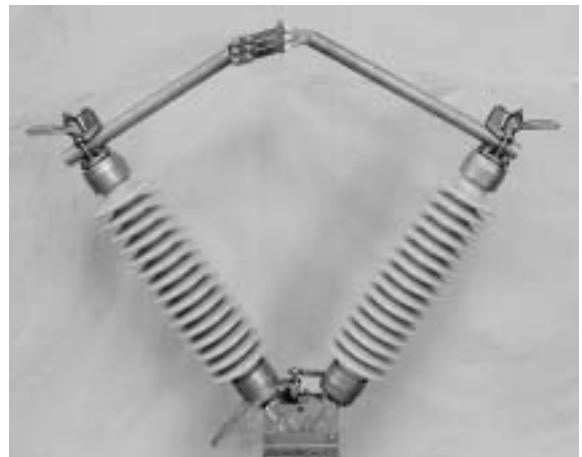
**MEMCO**  
POWER PRODUCTS DIVISION

**TYPE EE and EEB CENTER-  
SIDE-BREAK SWITCH  
TYPE VEE and CBV CENTER  
BREAK "V" SWITCH  
*1200, 1600, 2000 & 3000 Amperes  
7.5 through 362 kV***

**TYPE EE**



**TYPE CBV**

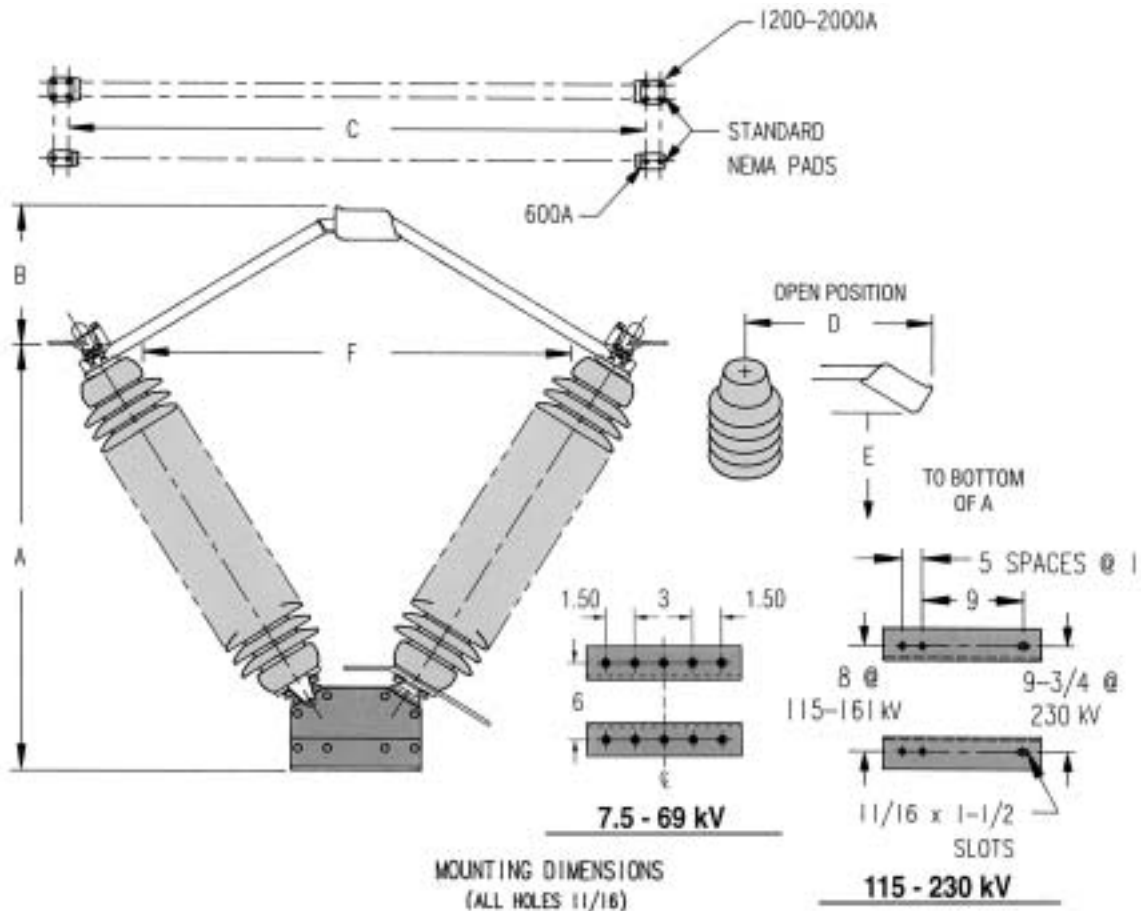


# Morpac Type CBV

## Copper Center Break "V" Switch

### CENTER BREAK "V"

The Morpac center break "V", designated Type CBV, is a heavy duty, substation class, 30° C rise, maintenance free disconnect switch for outdoor installation. The switch is designed for group operation, and is used in all types of electrical power circuits from 7.5 kV to 230 kV, with continuous current ratings from 600 to 2000 amperes. The compact base design and symmetrical features are ideal for direct pole mounting (phase over phase and center phase opposite), cross arm mounting, and substation installations where a massive support structure is not desirable.



kV	INSULATOR	DIMENSIONS						WEIGHT/POLE		
		A	B	C	D	E	F	600A	1200A	2000A
7.5	TR-202	15 1/4	2 1/4	25	11 1/2	11	10 3/4	72	88	132
15	TR-205	17 1/2	3 1/2	27 3/4	13 3/4	13 3/4	13 3/4	84	100	145
23	TR-208	21	4	31 3/4	15 3/4	18 1/4	17 1/2	107	124	170
34.5	TR-210	24	8	36 1/4	19	21	21	124	130	189
46	TR-214	28 1/4	5 1/2	41	20	23	25 3/4	174	195	512
69	TR-216	36 1/4	11	48 1/4	25 1/2	30 3/4	32	235	238	254
115	TR-286	53	17	73	41	50	55	447	465	501
138	TR-288	60 1/4	24	84	47	54	61 1/2	497	524	561
161	TR-291	67 3/4	29	90 3/4	50	61	70	535	566	605
230	900 BIL	89	35	110	61	68	93	894	929	971
230	1050 BIL	98 1/2	40	126	68	98	105	1022	1058	1110