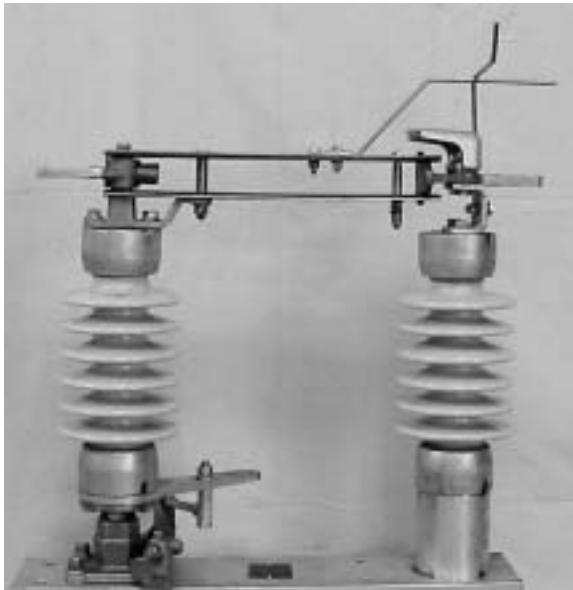


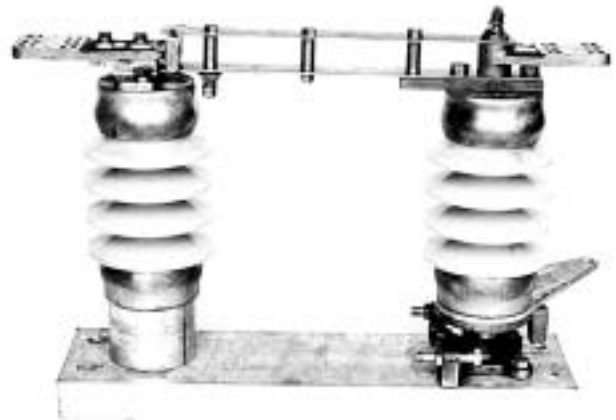
## **SIDE BREAK SWITCHES TYPES R14C and CSB**

*Ratings from 7.5 KV to 69 KV  
600 and 1200 Amps*

**R14C**



**CSB**



**Type CSB 15kV, 1200 ampere**

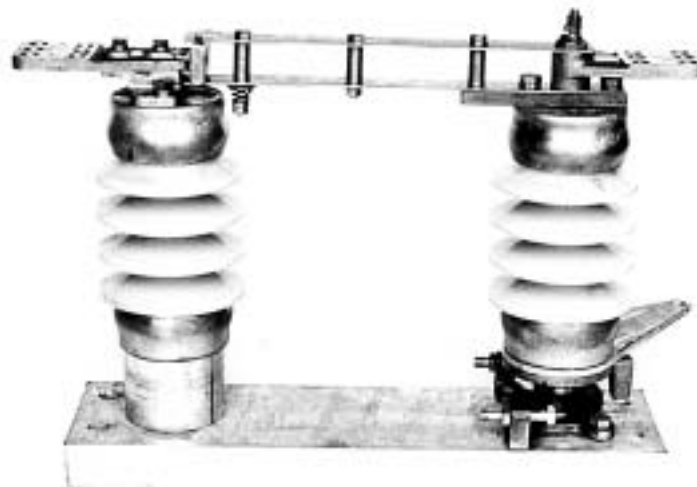
# Morpac Type CSB

## SIDE BREAK SWITCH

The Morpac Type CSB is designed for substation and distribution use., Engineered to meet the original ANSI 30 degree rise standard, it is a high quality copper switch manufactured to the stringent standards of all Morpac switches.

Current carrying parts are high conductivity copper or copper alloy. The large cross-sectional areas plus a minimum of current interchange surfaces provide a low resistance current path. Both contact surfaces are plated with high-density silver which prevents galling and assures good electrical contact under corrosive conditions. The bearing consists of a cold rolled C1018 shaft running through oilite bushings (roller bearing available), creating a maintenance free bearing for the life of the switch.

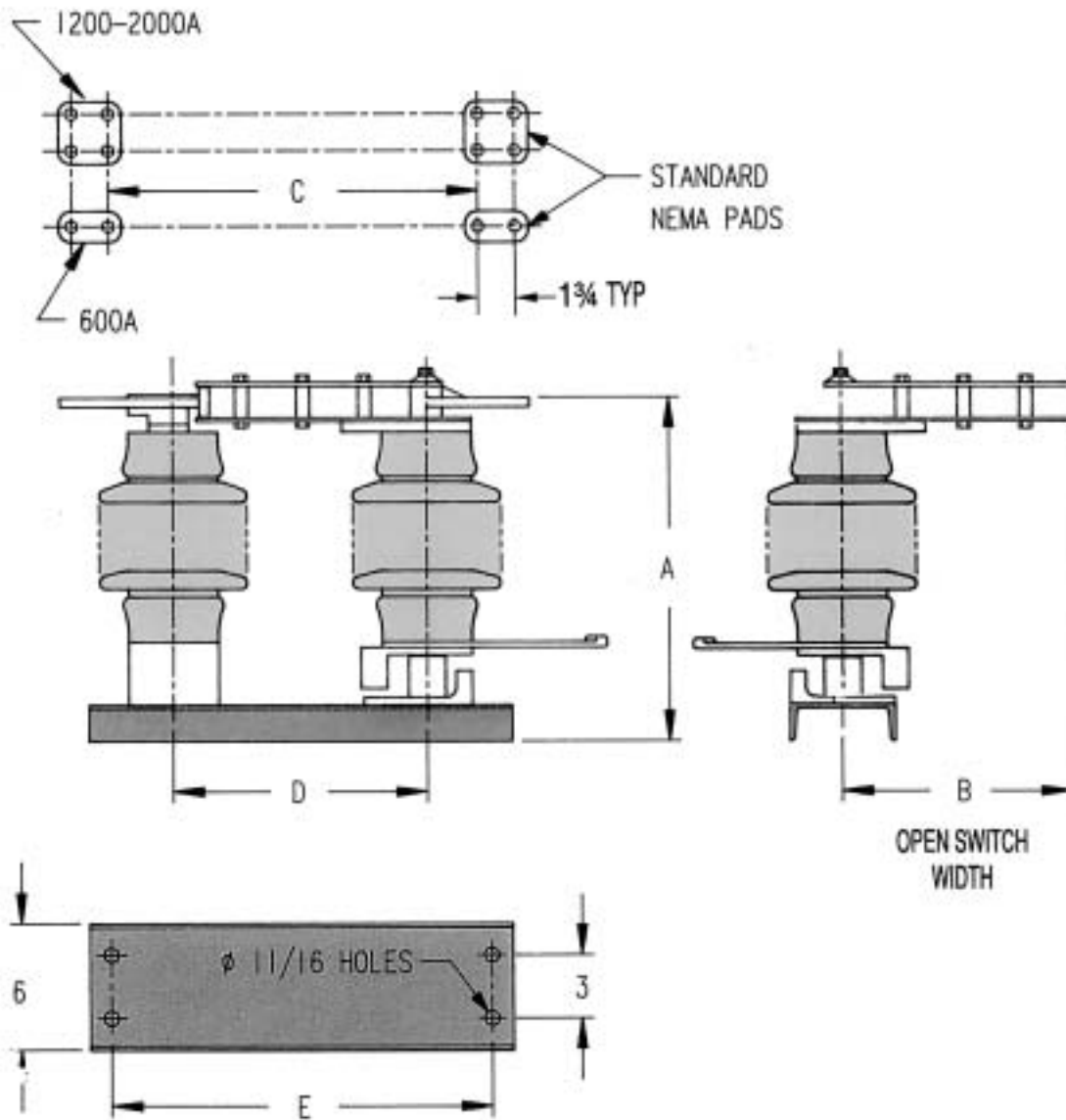
The switch is designed to meet all applicable NEMA and ANSI standards. All live parts hardware is stainless steel/non-ferrous. Tinned terminal pads are available upon request.



**Type CSB 15kV, 1200 ampere**

# Morpac Type CSB

## *Side Break Group Operated Switch*



KV	INSULATOR	DIMENSIONS					WEIGHT/POLE	
		A	B	C	D	E	600A	1200A
7.5	TR-202	14	11	17½	12	18	55	61
15	TR-205	16½	14	20½	15	21	69	76
23	TR-208	20½	17	23½	18	24	93	97
34.5	TR-210	24½	23	29½	24	30	114	121
46	TR-214	28½	29	35½	30	38	148	155
69	TR-216	36½	41	47½	42	48	228	235