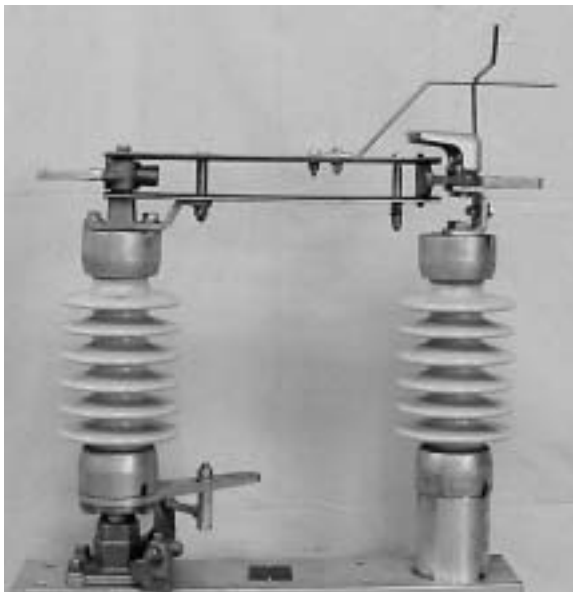


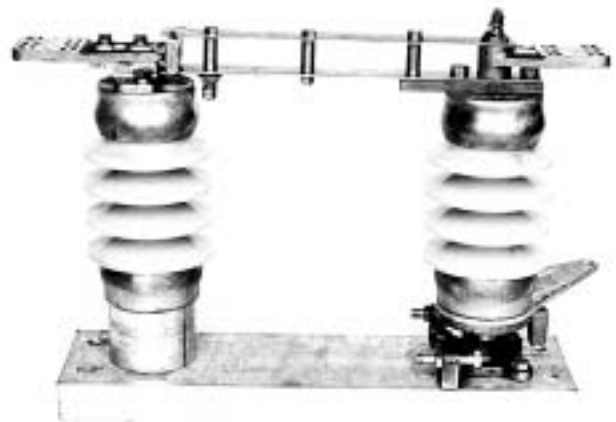
SIDE BREAK SWITCHES TYPES R14C and CSB

*Ratings from 7.5 KV to 69 KV
600 and 1200 Amps*

R14C



CSB



Type CSB 15kV, 1200 ampere

Type R14-C

The type R14-C is a three pole, single throw side-break, outdoor disconnect switch available in ratings up to 72.5 kV at 600 and 1200 amps. The R14-C is an all copper switch with high conductivity copper blades and silver inlaid stationary contacts.

BLADE

Parallel copper bar construction formed and trussed for maximum rigidity. Special forming provides four high pressure contact points. Pressure is supplied by stainless steel compression springs.

To reduce operating effort at 69 kV, the blades are articulated to create a whip effect when closing. This insures positive and consistent closing. Blades for 48.3 kV do not require articulation to insure positive closing.

JAW CONTACT

Cast copper, high conductivity alloy terminal, bayonet style with silver inlay brazed to the contact surfaces.

HINGE CONTACT

Threaded copper stud with heavy silver plate, completely sealed and enclosed. Contact pressure is provided by a stainless steel compression spring to insure continuous contact throughout the range of operation. No maintenance is required for the hinge contact.

MOUNTING

The R14-C is suitable for horizontal, vertical or underhung mounting on wood or steel structures.

BASE

Galvanized structural channel base is standard. Aluminum bases available as an option

ROTATING INSULATOR BEARING

Sleeve type sintered bronze bearings are used on switches up to 48.3 KV. Stainless steel ball and race bearings are used on 69 kV switches.



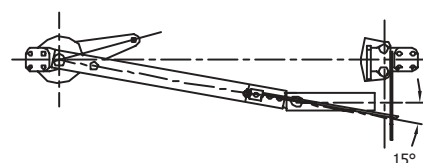
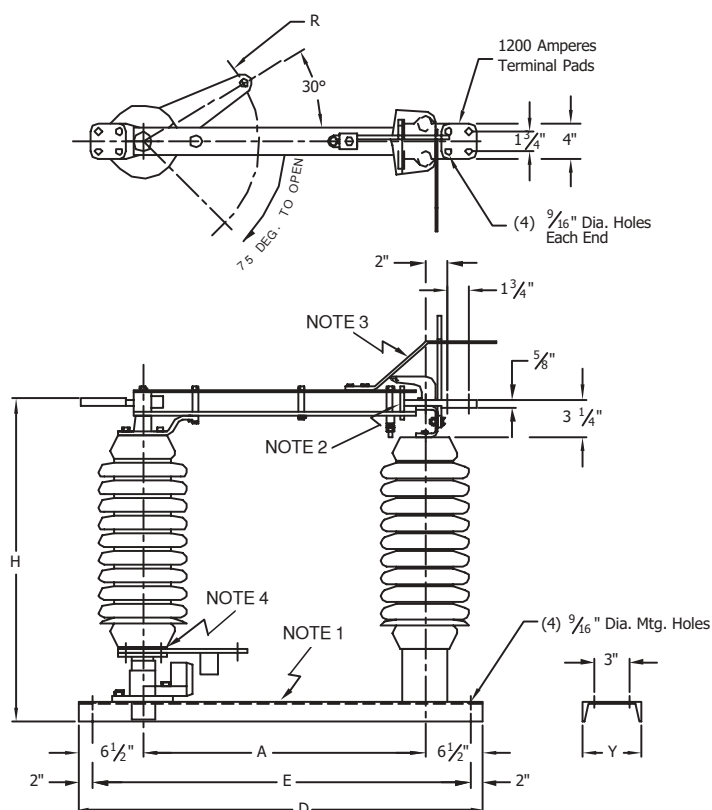
R14-C with optional arcing horns

ASSEMBLY

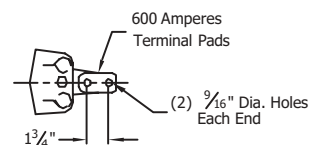
Switches rated 48.3 kV and below are shipped completely assembled on insulators, standard. Assembly on insulators is offered as an option at 69 kV.

ACCESSORIES

Ground switch, arc horns, motorized operation, outriggers, auxiliary switches and much more.



**TOGGLE-ACTION BLADE TIP
FOR 69 kV ONLY**



NOTES

- 1 ---- Standard base shown, others available.
- 2 ---- Silver-to-copper contacts furnished unless otherwise specified.
- 3 ---- Arcing horns furnished only when specified.
- 4 ---- Insulator leveling screws provided at 69 kV only.

Voltage Rating kV		CATALOG NUMBER (1) (2) (3)	Insul. Tech. Ref. No.	Approximate Dimensions (Refer to Factory for Certified Prints)					
Max.	BIL			A	D	E	H	R	Y
8.2	95	7R14C-6P3	202	15"	28"	24"	17"	8"	5"
15.5	110	15R14C-6P3	205	15"	28"	24"	19 1/2"	8"	5"
25.8	150	23R14C-6P3	208	18"	31"	27"	23 1/2"	8"	5"
38	200	34R14C-6P3	210	24"	37"	33"	27 1/2"	10"	6"
48.3	250	46R14C-6P3	214	30"	43"	39"	31 3/4"	10"	6"
72.5	350	69R14C-6P3	216	42"	55"	51"	41"	10"	8"

- (1) Catalog numbers shown are with station post insulators. If cap and pin insulators are required, change the P to C in the catalog number (eg.: 7R14C-12C3).
- (2) Catalog numbers are for 30° rise ANSI-C37.37 AACC designation A01.
- (3) Catalog numbers shown are for 600 amps. For 1200 amps, change 6 to 12 in the catalog number as required (eg.: 8.2 kV-1200 A: Cat. No. 7R14C-12P3).

Ampere Rating	Momentary Rating
600A	40 KA
1200A	61 KA

Type R14C 8.2 kV - 72.5 kV 600 and 1200 Ampere